



PINNACLE — ANALYTICS —

Potency Results

Sample Name: *Airheads Pre Roll*

Client: Elevated Trading LLC

Client Batch ID:

Pinnacle-Analytics.com

3549 Lear Way, Suite 101

Medford OR 97504

P:(541)300-8217

Sample ID: rC-H-302-F189

Matrix: Flower

Prep Analyst: Jeff A.

Analysis Method: 0668534+1 H3 5-22-2024 #1.lcm

Sampling Method: N/A

Reference Method: JCB 2009: HPLC/DAD

Analysis Batch: 1-15-2025 H3 276, 302, 355, 474, 562 Flower

Date Sampled: 1/15/2025

Date Reported: 1/22/2025

Client License: N/A

130 Oak Park Dr. Suite A

Mooreville NC 28115

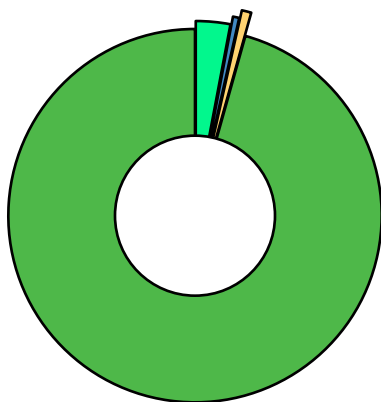
For R&D Purposes Only

Total THC (THCA*0.877+d9-THC)	21.6%
Total CBD (CBDA*0.877+CBD)	0.139%
Moisture Content	5.33%

Cannabinoid	% Weight	mg/g
CBDVA	<LOQ	<LOQ
CBDV	<LOQ	<LOQ
CBDA*	<LOQ	<LOQ
CBGA	<LOQ	<LOQ
CBG	0.76	7.6
CBD*	0.139	1.39
THCV	<LOQ	<LOQ
CBN	<LOQ	<LOQ
d9-THC*	0.211	2.11
d8-THC*	<LOQ	<LOQ
CBC	<LOQ	<LOQ
THCA*	24.4	244.0
Total Cannabinoids	25.51	255.0

*ORELAP Accredited Analyte

Limit Of Quantitation: 0.1%, analyte not measured



These test results may not be altered or reproduced except in full without the permission of Pinnacle Analytics. These results were generated following the Oregon Administrative Rules and in accordance with the NELAP Institute under ORELAP License #4152
Report generated by Routine_Potency_Rev15_12-23-2024

Kris Ford, PhD
Lab Director



PINNACLE ANALYTICS

Quality Control Results

Analyst: Jeff A.

Analysis Batch: 1-15-2025 H3 276, 302, 355, 474, 562 Flower

Pinnacle-Analytics.com
3549 Lear Way, Suite 101
Medford OR 97504
P:(541)300-8217

	Duplicate RPD		LCS % Recovery		Method Blank	
	H-0-F178-b	Limit	C-FL-011525	Limits	C-FB-011525	Limit
CBDA	<LOQ%	30%	99.9%	90-110%	<LOQ/2	LOQ/2
CBD	<LOQ%	30%	102.0%	90-110%	<LOQ/2	LOQ/2
d9-THC	0.0916%	30%	90.7%	90-110%	<LOQ/2	LOQ/2
d8-THC	<LOQ%	30%	116.0%	90-110%	<LOQ/2	LOQ/2
THCA	0.836%	10%	97.2%	90-110%	<LOQ/2	LOQ/2

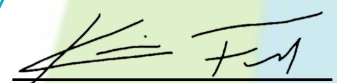
RPD: Relative Percent Difference between unknown sample and its duplicate

LCS: Laboratory Control Sample with known concentration

Case Comments: There were no divergences from ordinary Quality Control procedures or SOPs.



These test results may not be altered or reproduced except in full without the permission of Pinnacle Analytics. These results were generated following the Oregon Administrative Rules and in accordance with the NELAP Institute under ORELAP License #4152
Report generated by Routine_Potency_Rev15_12-23-2024


Kris Ford, PhD
Lab Director



PINNACLE — ANALYTICS —

Potency Results

Sample Name: *Blueberry Kush Pre Roll*
Client: Elevated Trading LLC
Client Batch ID:

Pinnacle-Analytics.com
3549 Lear Way, Suite 101
Medford OR 97504
P:(541)300-8217

Sample ID: rC-H-302-F400

Matrix: Flower

Prep Analyst: Jeff A.

Analysis Method: 0717363 H4 2-26-2025 #1.lcm

Sampling Method: N/A

Reference Method: JCB 2009: HPLC/DAD

Analysis Batch: 3-4-2025 H3 14, 276, 302 Flower

Date Sampled: 3/1/2025

Date Reported: 3/6/2025

Client License: N/A

130 Oak Park Dr. Suite A

Mooreville NC 28115

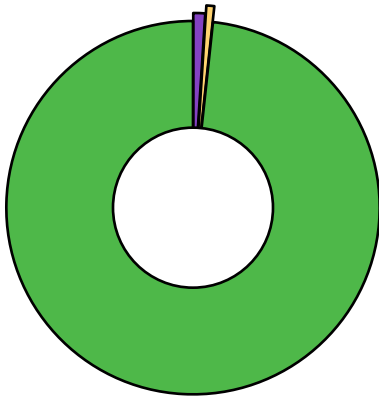
For R&D Purposes Only

Total THC (THCA*0.877+d9-THC)	22.9%
Total CBD (CBDA*0.877+CBD)	0%
Moisture Content	5.54%

Cannabinoid	% Weight	mg/g
CBDV	<LOQ	<LOQ
CBDA	<LOQ	<LOQ
CBGA	0.27	2.7
CBG	<LOQ	<LOQ
CBD	<LOQ	<LOQ
THCV	<LOQ	<LOQ
CBN	<LOQ	<LOQ
d9-THC	0.18	1.8
d8-THC	<LOQ	<LOQ
CBC	<LOQ	<LOQ
THCA	25.9	259.0
Total Cannabinoids	26.35	264.0

*ORELAP Accredited Analyte

Limit Of Quantitation: 0.1%, analyte not measured



- CBGA
- d9-THC
- THCA



These test results may not be altered or reproduced except in full without the permission of Pinnacle Analytics. These results were generated following the Oregon Administrative Rules and in accordance with the NELAP Institute under ORELAP License #4152
Report generated by Flex_Potency_Rev1_2-9-2025

Kris Ford, PhD
Lab Director



PINNACLE

— ANALYTICS —

Quality Control Results

Analyst: Jeff A.

Analysis Batch: 3-4-2025 H3 14, 276, 302 Flower

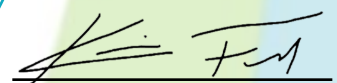
Pinnacle-Analytics.com
3549 Lear Way, Suite 101
Medford OR 97504
P:(541)300-8217

	Duplicate RPD		LCS % Recovery		Method Blank	
	H-14-F369-b	Limit	C-FL-030425	Limits	C-FB-030425	Limit
CBDA	<LOQ%	30%	96.4%	90-110%	<LOQ/2	LOQ/2
CBD	<LOQ%	30%	100.0%	90-110%	<LOQ/2	LOQ/2
d9-THC	1.26%	10%	98.5%	90-110%	<LOQ/2	LOQ/2
d8-THC	<LOQ%	30%	97.4%	90-110%	<LOQ/2	LOQ/2
THCA	0.738%	10%	98.8%	90-110%	<LOQ/2	LOQ/2

RPD: Relative Percent Difference between unknown sample and its duplicate
LCS: Laboratory Control Sample with known concentration
Case Comments: There were no divergences from ordinary Quality Control procedures or SOPs.



These test results may not be altered or reproduced except in full without the permission of Pinnacle Analytics. These results were generated following the Oregon Administrative Rules and in accordance with the NELAP Institute under ORELAP License #4152
Report generated by Flex_Potency_Rev1_2-9-2025


Kris Ford, PhD
Lab Director



PINNACLE — ANALYTICS —

Potency Results

Sample Name: *Cherry Zkittles Blunt*
Client: Elevated Trading LLC
Client Batch ID:

Pinnacle-Analytics.com
3549 Lear Way, Suite 101
Medford OR 97504
P:(541)300-8217

Sample ID: rC-H-302-F407

Matrix: Flower

Prep Analyst: Jeff A.

Analysis Method: 0717363 H4 2-26-2025 #1.lcm

Sampling Method: N/A

Reference Method: JCB 2009: HPLC/DAD

Analysis Batch: 3-4-2025 H3 14, 276, 302 Flower

Date Sampled: 3/1/2025

Date Reported: 3/6/2025

Client License: N/A

130 Oak Park Dr. Suite A

Mooreville NC 28115

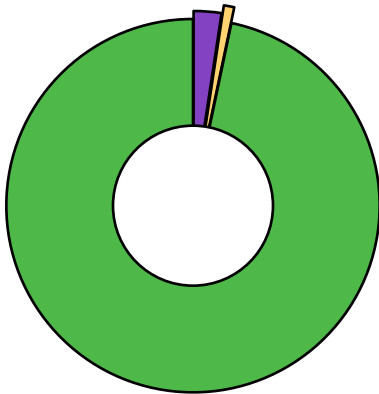
For R&D Purposes Only

Total THC (THCA*0.877+d9-THC)	21.8%
Total CBD (CBDA*0.877+CBD)	0%
Moisture Content	4.78%

Cannabinoid	% Weight	mg/g
CBDV	<LOQ	<LOQ
CBDA	<LOQ	<LOQ
CBGA	0.61	6.1
CBG	<LOQ	<LOQ
CBD	<LOQ	<LOQ
THCV	<LOQ	<LOQ
CBN	<LOQ	<LOQ
d9-THC	0.23	2.3
d8-THC	<LOQ	<LOQ
CBC	<LOQ	<LOQ
THCA	24.6	246.0
Total Cannabinoids	25.44	254.0

*ORELAP Accredited Analyte

Limit Of Quantitation: 0.1%, analyte not measured



- CBGA
- d9-THC
- THCA



These test results may not be altered or reproduced except in full without the permission of Pinnacle Analytics. These results were generated following the Oregon Administrative Rules and in accordance with the NELAP Institute under ORELAP License #4152
Report generated by Flex_Potency_Rev1_2-9-2025

Kris Ford, PhD
Lab Director



PINNACLE — ANALYTICS —

Quality Control Results

Analyst: Jeff A.

Analysis Batch: 3-4-2025 H3 14, 276, 302 Flower

Pinnacle-Analytics.com
3549 Lear Way, Suite 101
Medford OR 97504
P:(541)300-8217

	Duplicate RPD		LCS % Recovery		Method Blank	
	H-14-F369-b	Limit	C-FL-030425	Limits	C-FB-030425	Limit
CBDA	<LOQ%	30%	96.4%	90-110%	<LOQ/2	LOQ/2
CBD	<LOQ%	30%	100.0%	90-110%	<LOQ/2	LOQ/2
d9-THC	1.26%	10%	98.5%	90-110%	<LOQ/2	LOQ/2
d8-THC	<LOQ%	30%	97.4%	90-110%	<LOQ/2	LOQ/2
THCA	0.738%	10%	98.8%	90-110%	<LOQ/2	LOQ/2

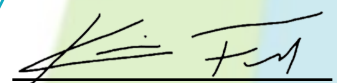
RPD: Relative Percent Difference between unknown sample and its duplicate

LCS: Laboratory Control Sample with known concentration

Case Comments: There were no divergences from ordinary Quality Control procedures or SOPs.



These test results may not be altered or reproduced except in full without the permission of Pinnacle Analytics. These results were generated following the Oregon Administrative Rules and in accordance with the NELAP Institute under ORELAP License #4152
Report generated by Flex_Potency_Rev1_2-9-2025


Kris Ford, PhD
Lab Director

Elevated Trading LLC

Sample 616-120324-414

Garfield THCA Flower

Batch/Lot # GF17922

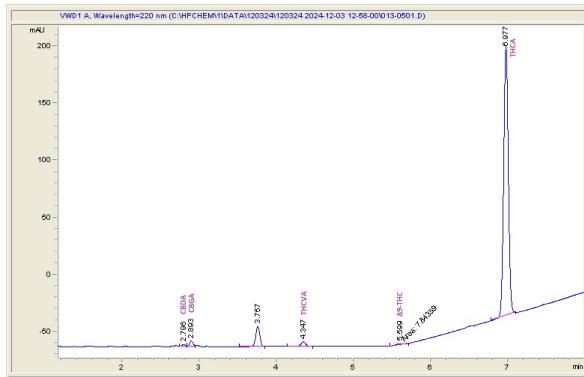
Sample Submitted: 12-03-2024; Report Date: 12-06-2024

Garfield THCA Flower

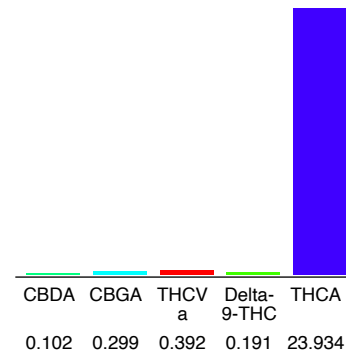
Plant Material

Batch/Lot # GF17922

Chromatogram



Cannabinoid Profile



Cannabinoid Profile by HPLC

0.19%
Delta-9-THC

0.00%
CBD

24.92%
Total Cannabinoids

Cannabinoid	% wt	mg/g
CBDA	0.102	1.02
CBGA	0.299	2.99
THCVa	0.392	3.92
Delta-9-THC	0.191	1.91
THCA	23.93	239.34
Total Cannabinoids	24.92	249.2
Calculated Total THC	21.18	211.81
Calculated CBD Yield	0.09	0.89

Calculated Total THC = Delta-9-THC + 0.877 * THCA
 Calculated Maximum CBD Yield = CBD + 0.877 * CBDA

Marin Analytics, LLC
 250 Bel Marin Keys Blvd, Suite D4
 Novato, CA 94949
 833-321-TEST / info@marinanalytics.com

Mike Clemmons
 Lab Manager

This sample has been tested by Marin Analytics, LLC using valid testing methodologies and a quality system. Values reported relate only to the sample tested. Marin Analytics, LLC makes no claims as to the efficacy, safety, or other risks associated with any detected or non-detected levels of any compounds reported herein. This Certificate shall not be reproduced except in full without the written approval of Marin Analytics, LLC. Copyright 2023 Marin Analytics, LLC All Rights Reserved.



PINNACLE — ANALYTICS —

Potency Results

Sample Name: *Gelato Pre Roll*
Client: Elevated Trading LLC
Client Batch ID:

Pinnacle-Analytics.com
3549 Lear Way, Suite 101
Medford OR 97504
P:(541)300-8217

Sample ID: rC-H-302-F188

Matrix: Flower

Prep Analyst: Jeff A.

Analysis Method: 0668534+1 H3 5-22-2024 #1.lcm

Sampling Method: N/A

Reference Method: JCB 2009: HPLC/DAD

Analysis Batch: 1-15-2025 H3 276, 302, 355, 474, 562 Flower

Date Sampled: 1/15/2025

Date Reported: 1/22/2025

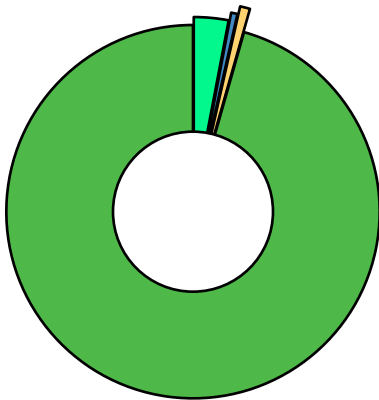
Client License: N/A

130 Oak Park Dr. Suite A

Mooreville NC 28115

For R&D Purposes Only

Total THC (THCA*0.877+d9-THC) **21.3%**
Total CBD (CBDA*0.877+CBD) **0.138%**
Moisture Content **5.8%**



Cannabinoid	% Weight	mg/g
CBDVA	<LOQ	<LOQ
CBDV	<LOQ	<LOQ
CBDA*	<LOQ	<LOQ
CBGA	<LOQ	<LOQ
CBG	0.752	7.52
CBD*	0.138	1.38
THCV	<LOQ	<LOQ
CBN	<LOQ	<LOQ
d9-THC*	0.217	2.17
d8-THC*	<LOQ	<LOQ
CBC	<LOQ	<LOQ
THCA*	24.0	240.0
Total Cannabinoids	25.11	251.0

*ORELAP Accredited Analyte

Limit Of Quantitation: 0.1%, analyte not measured

■ CBG ■ THCA*
■ CBD*
■ d9-THC*



These test results may not be altered or reproduced except in full without the permission of Pinnacle Analytics. These results were generated following the Oregon Administrative Rules and in accordance with the NELAP Institute under ORELAP License #4152
Report generated by Routine_Potency_Rev15_12-23-2024

Kris Ford, PhD
Lab Director



PINNACLE — ANALYTICS —

Quality Control Results

Analyst: Jeff A.

Analysis Batch: 1-15-2025 H3 276, 302, 355, 474, 562 Flower

Pinnacle-Analytics.com
3549 Lear Way, Suite 101
Medford OR 97504
P:(541)300-8217

	Duplicate RPD		LCS % Recovery		Method Blank	
	H-0-F178-b	Limit	C-FL-011525	Limits	C-FB-011525	Limit
CBDA	<LOQ%	30%	99.9%	90-110%	<LOQ/2	LOQ/2
CBD	<LOQ%	30%	102.0%	90-110%	<LOQ/2	LOQ/2
d9-THC	0.0916%	30%	90.7%	90-110%	<LOQ/2	LOQ/2
d8-THC	<LOQ%	30%	116.0%	90-110%	<LOQ/2	LOQ/2
THCA	0.836%	10%	97.2%	90-110%	<LOQ/2	LOQ/2

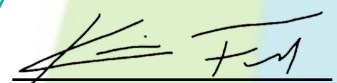
RPD: Relative Percent Difference between unknown sample and its duplicate

LCS: Laboratory Control Sample with known concentration

Case Comments: There were no divergences from ordinary Quality Control procedures or SOPs.



These test results may not be altered or reproduced except in full without the permission of Pinnacle Analytics. These results were generated following the Oregon Administrative Rules and in accordance with the NELAP Institute under ORELAP License #4152
Report generated by Routine_Potency_Rev15_12-23-2024


Kris Ford, PhD
Lab Director



Excelbis Labs
1920 E Warner Avenue
Santa Ana, CA 92705

(714) 340-7099
http://excelbislabs.com
Lic# C8-0000059-LIC

Ice Cream Cake Pre Roll

Sample ID: 2501EXL0108.0363

Strain: Ice Cream Cake PR

Matrix: Plant

Type: Flower - Cured

Sample Size: ; Batch:

Produced:

Collected:

Received: 01/08/2025

Completed: 01/08/2025

Batch#: ICC123025

Client

Elevated Trading LLC

Lic. #



Summary

Test	Date Tested	Result
Batch		Complete
Cannabinoids		Complete
Moisture		13.3% - Complete

Cannabinoids

Complete

25.611% Total THC	1.764% Total CBD	27.517% Total Cannabinoids
-----------------------------	----------------------------	--------------------------------------

Analyte	LOD	LOQ	Result	Result
	mg/g	mg/g	%	mg/g
CBC	0.009	0.025	0.0651	0.651
CBD	0.025	0.100	1.2852	12.852
CBDa	0.019	0.050	0.5465	5.465
CBG	0.019	0.050	0.0764	0.764
CBN	0.009	0.050	ND	ND
Δ8-THC	0.025	0.100	ND	ND
Δ9-THC	0.019	0.100	0.2676	2.676
THCa	0.013	0.050	28.8978	288.978
THCV	0.025	0.100	ND	ND
Total THC			25.611	256.110
Total CBD			1.764	17.644
Total CBG			0.076	0.764
Total			27.517	275.169



Date Tested:

Total THC = THCa * 0.877 + Δ9-THC + Δ8 THC; Total CBD = CBDa * 0.877 + CBD; Total CBG = CBGa * 0.877 + CBG.

Total Cannabinoids = Total THC + Total CBD + Total CBG + minor cannabinoids.

Cannabinoids: HPLC, CAN-SOP-001

Water Activity: Water Activity Meter, WA-SOP-001

Moisture Content: Moisture Analyzer, MO-SOP-001

Foreign Matter: Visual Inspection, FM-SOP-001



Dr. Jerry White PhD Bryan Zahakaylo

Jerry White, PhD
Chief Scientific Officer
01/08/2025

Bryan Zahakaylo
Analyst
01/08/2025

Confident LIMS
All Rights Reserved
coa.support@confidentlims.com
(866) 506-5866
www.confidentlims.com





PINNACLE — ANALYTICS —

Potency Results

Sample Name: Ice Cream Cookies Pre Roll
Client: Elevated Trading LLC
Client Batch ID:

Pinnacle-Analytics.com
3549 Lear Way, Suite 101
Medford OR 97504
P:(541)300-8217

Sample ID: rC-H-302-F190

Matrix: Flower

Prep Analyst: Jeff A.

Analysis Method: 0668534+1 H3 5-22-2024 #1.lcm

Sampling Method: N/A

Reference Method: JCB 2009: HPLC/DAD

Analysis Batch: 1-15-2025 H3 276, 302, 355, 474, 562 Flower

Date Sampled: 1/15/2025

Date Reported: 1/22/2025

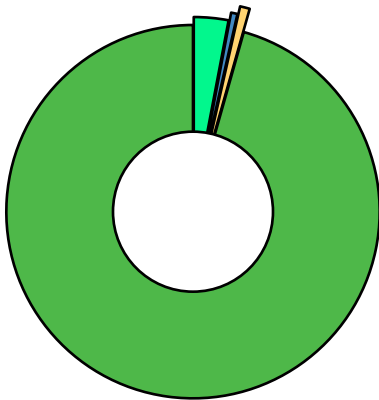
Client License: N/A

130 Oak Park Dr. Suite A

Mooreville NC 28115

For R&D Purposes Only

Total THC (THCA*0.877+d9-THC) **21.4%**
Total CBD (CBDA*0.877+CBD) **0.139%**
Moisture Content **5.2%**



Cannabinoid	% Weight	mg/g
CBDVA	<LOQ	<LOQ
CBDV	<LOQ	<LOQ
CBDA*	<LOQ	<LOQ
CBGA	<LOQ	<LOQ
CBG	0.754	7.54
CBD*	0.139	1.39
THCV	<LOQ	<LOQ
CBN	<LOQ	<LOQ
d9-THC*	0.213	2.13
d8-THC*	<LOQ	<LOQ
CBC	<LOQ	<LOQ
THCA*	24.1	241.0
Total Cannabinoids	25.21	252.0

*ORELAP Accredited Analyte

Limit Of Quantitation: 0.1%, analyte not measured

■ CBG ■ THCA*
■ CBD*
■ d9-THC*



These test results may not be altered or reproduced except in full without the permission of Pinnacle Analytics. These results were generated following the Oregon Administrative Rules and in accordance with the NELAP Institute under ORELAP License #4152
Report generated by Routine_Potency_Rev15_12-23-2024

Kris Ford, PhD
Lab Director



PINNACLE

— ANALYTICS —

Quality Control Results

Analyst: Jeff A.

Analysis Batch: 1-15-2025 H3 276, 302, 355, 474, 562 Flower

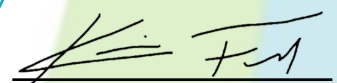
Pinnacle-Analytics.com
3549 Lear Way, Suite 101
Medford OR 97504
P:(541)300-8217

	Duplicate RPD		LCS % Recovery		Method Blank	
	H-0-F178-b	Limit	C-FL-011525	Limits	C-FB-011525	Limit
CBDA	<LOQ%	30%	99.9%	90-110%	<LOQ/2	LOQ/2
CBD	<LOQ%	30%	102.0%	90-110%	<LOQ/2	LOQ/2
d9-THC	0.0916%	30%	90.7%	90-110%	<LOQ/2	LOQ/2
d8-THC	<LOQ%	30%	116.0%	90-110%	<LOQ/2	LOQ/2
THCA	0.836%	10%	97.2%	90-110%	<LOQ/2	LOQ/2

RPD: Relative Percent Difference between unknown sample and its duplicate
LCS: Laboratory Control Sample with known concentration
Case Comments: There were no divergences from ordinary Quality Control procedures or SOPs.



These test results may not be altered or reproduced except in full without the permission of Pinnacle Analytics. These results were generated following the Oregon Administrative Rules and in accordance with the NELAP Institute under ORELAP License #4152
Report generated by Routine_Potency_Rev15_12-23-2024


Kris Ford, PhD
Lab Director



PINNACLE — ANALYTICS —

Potency Results

Sample Name: *Lemon Bomb Pre Roll*
Client: Elevated Trading LLC
Client Batch ID:

Pinnacle-Analytics.com
3549 Lear Way, Suite 101
Medford OR 97504
P:(541)300-8217

Sample ID: rC-H-302-F234

Matrix: Flower

Prep Analyst: Jeff A.

Analysis Method: 0668534+1 H4 5-24-2024 #1.lcm

Sampling Method: N/A

Reference Method: JCB 2009: HPLC/DAD

Analysis Batch: 1-30-2025 H3 302, 355 Flower

Date Sampled: 1/27/2025

Date Reported: 1/30/2025

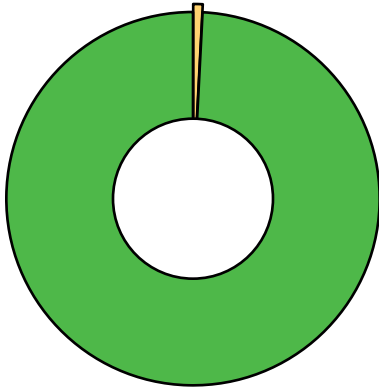
Client License: N/A

130 Oak Park Dr. Suite A

Mooreville NC 28115

For R&D Purposes Only



Total THC (THCA*0.877+d9-THC) **23.8%**
Total CBD (CBDA*0.877+CBD) **<LOQ%**
Moisture Content **7.74%**



Cannabinoid	% Weight	mg/g
CBDVA	<LOQ	<LOQ
CBDV	<LOQ	<LOQ
CBDA*	<LOQ	<LOQ
CBGA	<LOQ	<LOQ
CBG	<LOQ	<LOQ
CBD*	<LOQ	<LOQ
THCV	<LOQ	<LOQ
CBN	<LOQ	<LOQ
d9-THC*	0.221	2.21
d8-THC*	<LOQ	<LOQ
CBC	<LOQ	<LOQ
THCA*	26.8	268.0
Total Cannabinoids	27.02	270.0

*ORELAP Accredited Analyte

Limit Of Quantitation: 0.1%, analyte not measured

 d9-THC*
 THCA*



These test results may not be altered or reproduced except in full without the permission of Pinnacle Analytics. These results were generated following the Oregon Administrative Rules and in accordance with the NELAP Institute under ORELAP License #4152
Report generated by Routine_Potency_Rev13_8-1-2023

Kris Ford, PhD
Lab Director



PINNACLE — ANALYTICS —

Quality Control Results

Analyst: Jeff A.

Analysis Batch: 1-30-2025 H3 302, 355 Flower

Pinnacle-Analytics.com
3549 Lear Way, Suite 101
Medford OR 97504
P:(541)300-8217

	Duplicate RPD		LCS % Recovery		Method Blank	
	H-0-F247-b	Limit	C-FL-013025	Limits	C-FB-013025	Limit
CBDA	<LOQ%	30%	103.0%	90-110%	<LOQ/2	LOQ/2
CBD	1.53%	30%	104.0%	90-110%	<LOQ/2	LOQ/2
d9-THC	1.03%	30%	101.0%	90-110%	<LOQ/2	LOQ/2
d8-THC	<LOQ%	30%	103.0%	90-110%	<LOQ/2	LOQ/2
THCA	0.386%	10%	102.0%	90-110%	<LOQ/2	LOQ/2

RPD: Relative Percent Difference between unknown sample and its duplicate

LCS: Laboratory Control Sample with known concentration

Case Comments: There were no divergences from ordinary Quality Control procedures or SOPs.



These test results may not be altered or reproduced except in full without the permission of Pinnacle Analytics. These results were generated following the Oregon Administrative Rules and in accordance with the NELAP Institute under ORELAP License #4152
Report generated by Routine_Potency_Rev13_8-1-2023

Kris Ford, PhD
Lab Director



PINNACLE — ANALYTICS —

Potency Results

Sample Name: *Mimosa Pre Roll*
Client: Elevated Trading LLC
Client Batch ID:

Pinnacle-Analytics.com
3549 Lear Way, Suite 101
Medford OR 97504
P:(541)300-8217

Sample ID: rC-H-302-F238

Matrix: Flower

Prep Analyst: Jeff A.

Analysis Method: 0668534+1 H4 5-24-2024 #1.lcm

Sampling Method: N/A

Reference Method: JCB 2009: HPLC/DAD

Analysis Batch: 1-30-2025 H3 302, 355 Flower

Date Sampled: 1/27/2025

Date Reported: 1/30/2025

Client License: N/A

130 Oak Park Dr. Suite A

Mooreville NC 28115

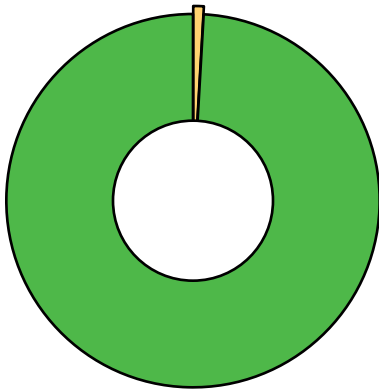
For R&D Purposes Only


Total THC (THCA*0.877+d9-THC)	23.0%
Total CBD (CBDA*0.877+CBD)	<LOQ%
Moisture Content	8.1%


Cannabinoid	% Weight	mg/g
CBDVA	<LOQ	<LOQ
CBDV	<LOQ	<LOQ
CBDA*	<LOQ	<LOQ
CBGA	<LOQ	<LOQ
CBG	<LOQ	<LOQ
CBD*	<LOQ	<LOQ
THCV	<LOQ	<LOQ
CBN	<LOQ	<LOQ
d9-THC*	0.239	2.39
d8-THC*	<LOQ	<LOQ
CBC	<LOQ	<LOQ
THCA*	26.0	260.0
Total Cannabinoids	26.24	262.0

*ORELAP Accredited Analyte

Limit Of Quantitation: 0.1%, analyte not measured



 d9-THC*

 THCA*



These test results may not be altered or reproduced except in full without the permission of Pinnacle Analytics. These results were generated following the Oregon Administrative Rules and in accordance with the NELAP Institute under ORELAP License #4152
Report generated by Routine_Potency_Rev13_8-1-2023

Kris Ford, PhD
Lab Director



PINNACLE — ANALYTICS —

Quality Control Results

Analyst: Jeff A.

Analysis Batch: 1-30-2025 H3 302, 355 Flower

Pinnacle-Analytics.com
3549 Lear Way, Suite 101
Medford OR 97504
P:(541)300-8217

	Duplicate RPD		LCS % Recovery		Method Blank	
	H-0-F247-b	Limit	C-FL-013025	Limits	C-FB-013025	Limit
CBDA	<LOQ%	30%	103.0%	90-110%	<LOQ/2	LOQ/2
CBD	1.53%	30%	104.0%	90-110%	<LOQ/2	LOQ/2
d9-THC	1.03%	30%	101.0%	90-110%	<LOQ/2	LOQ/2
d8-THC	<LOQ%	30%	103.0%	90-110%	<LOQ/2	LOQ/2
THCA	0.386%	10%	102.0%	90-110%	<LOQ/2	LOQ/2

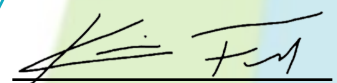
RPD: Relative Percent Difference between unknown sample and its duplicate

LCS: Laboratory Control Sample with known concentration

Case Comments: There were no divergences from ordinary Quality Control procedures or SOPs.



These test results may not be altered or reproduced except in full without the permission of Pinnacle Analytics. These results were generated following the Oregon Administrative Rules and in accordance with the NELAP Institute under ORELAP License #4152
Report generated by Routine_Potency_Rev13_8-1-2023


Kris Ford, PhD
Lab Director



PINNACLE — ANALYTICS —

Potency Results

Sample Name: *Purple Punch Pre Roll*
Client: Elevated Trading LLC
Client Batch ID:

Pinnacle-Analytics.com
3549 Lear Way, Suite 101
Medford OR 97504
P:(541)300-8217

Sample ID: rC-H-302-F237

Matrix: Flower

Prep Analyst: Jeff A.

Analysis Method: 0668534+1 H4 5-24-2024 #1.lcm

Sampling Method: N/A

Reference Method: JCB 2009: HPLC/DAD

Analysis Batch: 1-30-2025 H3 302, 355 Flower

Date Sampled: 1/27/2025

Date Reported: 1/30/2025

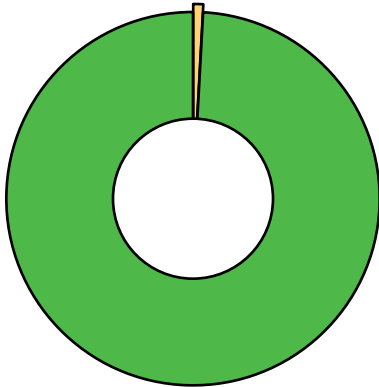
Client License: N/A

130 Oak Park Dr. Suite A

Mooreville NC 28115

For R&D Purposes Only



Total THC (THCA*0.877+d9-THC) **22.3%**
Total CBD (CBDA*0.877+CBD) **<LOQ%**
Moisture Content **8.11%**



Cannabinoid	% Weight	mg/g
CBDVA	<LOQ	<LOQ
CBDV	<LOQ	<LOQ
CBDA*	<LOQ	<LOQ
CBGA	<LOQ	<LOQ
CBG	<LOQ	<LOQ
CBD*	<LOQ	<LOQ
THCV	<LOQ	<LOQ
CBN	<LOQ	<LOQ
d9-THC*	0.219	2.19
d8-THC*	<LOQ	<LOQ
CBC	<LOQ	<LOQ
THCA*	25.1	251.0
Total Cannabinoids	25.32	253.0

*ORELAP Accredited Analyte

Limit Of Quantitation: 0.1%, analyte not measured

 d9-THC*
 THCA*



These test results may not be altered or reproduced except in full without the permission of Pinnacle Analytics. These results were generated following the Oregon Administrative Rules and in accordance with the NELAP Institute under ORELAP License #4152
Report generated by Routine_Potency_Rev13_8-1-2023

Kris Ford, PhD
Lab Director



PINNACLE — ANALYTICS —

Quality Control Results

Analyst: Jeff A.

Analysis Batch: 1-30-2025 H3 302, 355 Flower

Pinnacle-Analytics.com
3549 Lear Way, Suite 101
Medford OR 97504
P:(541)300-8217

	Duplicate RPD		LCS % Recovery		Method Blank	
	H-0-F247-b	Limit	C-FL-013025	Limits	C-FB-013025	Limit
CBDA	<LOQ%	30%	103.0%	90-110%	<LOQ/2	LOQ/2
CBD	1.53%	30%	104.0%	90-110%	<LOQ/2	LOQ/2
d9-THC	1.03%	30%	101.0%	90-110%	<LOQ/2	LOQ/2
d8-THC	<LOQ%	30%	103.0%	90-110%	<LOQ/2	LOQ/2
THCA	0.386%	10%	102.0%	90-110%	<LOQ/2	LOQ/2

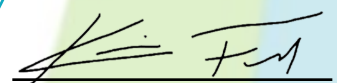
RPD: Relative Percent Difference between unknown sample and its duplicate

LCS: Laboratory Control Sample with known concentration

Case Comments: There were no divergences from ordinary Quality Control procedures or SOPs.



These test results may not be altered or reproduced except in full without the permission of Pinnacle Analytics. These results were generated following the Oregon Administrative Rules and in accordance with the NELAP Institute under ORELAP License #4152
Report generated by Routine_Potency_Rev13_8-1-2023


Kris Ford, PhD
Lab Director



PINNACLE — ANALYTICS —

Potency Results

Sample Name: *Runtz Pre Roll*
Client: Elevated Trading LLC
Client Batch ID:

Pinnacle-Analytics.com
3549 Lear Way, Suite 101
Medford OR 97504
P:(541)300-8217

Sample ID: rC-H-302-F191

Date Sampled: 1/15/2025

Matrix: Flower

Date Reported: 1/22/2025

Prep Analyst: Jeff A.

Client License: N/A

Analysis Method: 0668534+1 H3 5-22-2024 #1.lcm

130 Oak Park Dr. Suite A

Sampling Method: N/A

Mooreville NC 28115

Reference Method: JCB 2009: HPLC/DAD

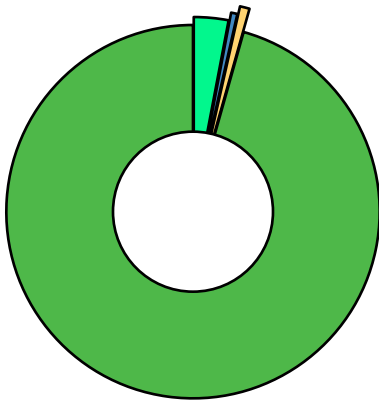
For R&D Purposes Only

Analysis Batch: 1-15-2025 H3 276, 302, 355, 474, 562 Flower

Total THC (THCA*0.877+d9-THC)	21.9%
Total CBD (CBDA*0.877+CBD)	0.141%
Moisture Content	5.11%

Cannabinoid	% Weight	mg/g
CBDVA	<LOQ	<LOQ
CBDV	<LOQ	<LOQ
CBDA*	<LOQ	<LOQ
CBGA	<LOQ	<LOQ
CBG	0.776	7.76
CBD*	0.141	1.41
THCV	<LOQ	<LOQ
CBN	<LOQ	<LOQ
d9-THC*	0.217	2.17
d8-THC*	<LOQ	<LOQ
CBC	<LOQ	<LOQ
THCA*	24.8	248.0
Total Cannabinoids	25.93	259.0

*ORELAP Accredited Analyte
Limit Of Quantitation: 0.1%, analyte not measured



- CBG
- THCA*
- CBD*
- d9-THC*



These test results may not be altered or reproduced except in full without the permission of Pinnacle Analytics. These results were generated following the Oregon Administrative Rules and in accordance with the NELAP Institute under ORELAP License #4152
Report generated by Routine_Potency_Rev15_12-23-2024

Kris Ford, PhD
Lab Director



PINNACLE — ANALYTICS —

Quality Control Results

Analyst: Jeff A.

Analysis Batch: 1-15-2025 H3 276, 302, 355, 474, 562 Flower

Pinnacle-Analytics.com
3549 Lear Way, Suite 101
Medford OR 97504
P:(541)300-8217

	Duplicate RPD		LCS % Recovery		Method Blank	
	H-0-F178-b	Limit	C-FL-011525	Limits	C-FB-011525	Limit
CBDA	<LOQ%	30%	99.9%	90-110%	<LOQ/2	LOQ/2
CBD	<LOQ%	30%	102.0%	90-110%	<LOQ/2	LOQ/2
d9-THC	0.0916%	30%	90.7%	90-110%	<LOQ/2	LOQ/2
d8-THC	<LOQ%	30%	116.0%	90-110%	<LOQ/2	LOQ/2
THCA	0.836%	10%	97.2%	90-110%	<LOQ/2	LOQ/2

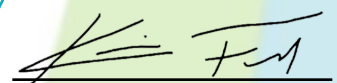
RPD: Relative Percent Difference between unknown sample and its duplicate

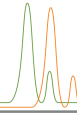
LCS: Laboratory Control Sample with known concentration

Case Comments: There were no divergences from ordinary Quality Control procedures or SOPs.



These test results may not be altered or reproduced except in full without the permission of Pinnacle Analytics. These results were generated following the Oregon Administrative Rules and in accordance with the NELAP Institute under ORELAP License #4152
Report generated by Routine_Potency_Rev15_12-23-2024


Kris Ford, PhD
Lab Director



Elevated Trading LLC

Sample 616-120324-422

Sherbet Head THCA Flower

Batch/Lot # SH17922

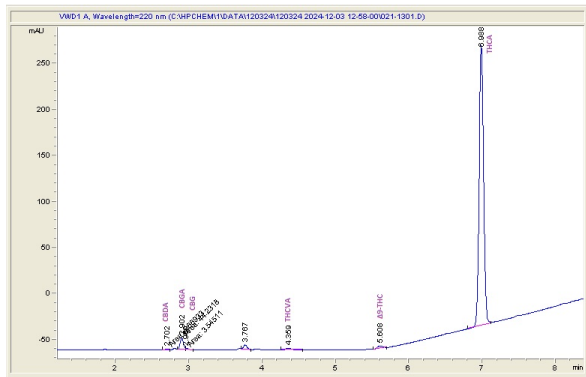
Sample Submitted: 12-03-2024; Report Date: 12-06-2024

Sherbet Head THCA Flower

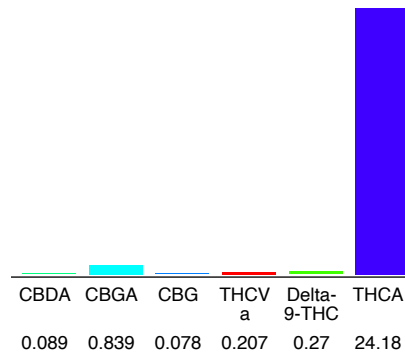
Batch/Lot # SH17922

Plant Material

Chromatogram



Cannabinoid Profile



Cannabinoid Profile by HPLC

0.27%
Delta-9-THC

0.00%
CBD

25.66%
Total Cannabinoids

Cannabinoid	% wt	mg/g
CBDA	0.089	0.89
CBGA	0.839	8.39
CBG	0.078	0.78
THCVa	0.207	2.07
Delta-9-THC	0.27	2.7
THCA	24.18	241.8
Total Cannabinoids	25.66	256.6
Calculated Total THC	21.48	214.76
Calculated CBD Yield	0.08	0.78

Calculated Total THC = Delta-9-THC + 0.877 * THCA

Calculated Maximum CBD Yield = CBD + 0.877 * CBDA

Marin Analytics, LLC

250 Bel Marin Keys Blvd, Suite D4
Novato, CA 94949

833-321-TEST / info@marinanalytics.com

Mike Clemmons
Lab Manager

This sample has been tested by Marin Analytics, LLC using valid testing methodologies and a quality system. Values reported relate only to the sample tested. Marin Analytics, LLC makes no claims as to the efficacy, safety, or other risks associated with any detected or non-detected levels of any compounds reported herein. This Certificate shall not be reproduced except in full without the written approval of Marin Analytics, LLC. Copyright 2023 Marin Analytics, LLC All Rights Reserved.



Skywalker OG Pre Roll

Sample ID: 2502EXL0535.2109

Strain: Skywalker OG

Matrix: Plant

Type: Flower - Cured

Sample Size: ; Batch:

Produced:

Collected:

Received: 02/04/2025

Completed: 02/04/2025

Batch#: SW012825

Client

Elevated Trading LLC

Lic. #



Summary

Test	Date Tested	Result
Batch		Complete
Cannabinoids		Complete
Moisture		16.2% - Complete

Cannabinoids

Complete

25.149% Total THC	0.364% Total CBD	25.636% Total Cannabinoids
-----------------------------	----------------------------	--------------------------------------

Analyte	LOD	LOQ	Result	Result
	mg/g	mg/g	%	mg/g
CBC	0.009	0.025	ND	ND
CBD	0.025	0.100	0.2863	2.863
CBDa	0.019	0.050	0.0886	0.886
CBG	0.019	0.050	0.1236	1.236
CBN	0.009	0.050	ND	ND
Δ8-THC	0.025	0.100	ND	ND
Δ9-THC	0.019	0.100	0.2883	2.883
THCa	0.013	0.050	28.3471	283.471
THCV	0.025	0.100	ND	ND
Total THC			25.149	251.488
Total CBD			0.364	3.639
Total CBG			0.124	1.236
Total			25.636	256.363



Date Tested:

Total THC = THCa * 0.877 + Δ9-THC + Δ8 THC; Total CBD = CBDa * 0.877 + CBD; Total CBG = CBGa * 0.877 + CBG.

Total Cannabinoids = Total THC + Total CBD + Total CBG + minor cannabinoids.

Cannabinoids: HPLC, CAN-SOP-001

Water Activity: Water Activity Meter, WA-SOP-001

Moisture Content: Moisture Analyzer, MO-SOP-001

Foreign Matter: Visual Inspection, FM-SOP-001



Dr. Jerry White PhD Bryan Zahakaylo

Jerry White, PhD
Chief Scientific Officer
02/04/2025

Bryan Zahakaylo
Analyst
02/04/2025

Confident LIMS
All Rights Reserved
coa.support@confidentlims.com
(866) 506-5866
www.confidentlims.com





Excelbis Labs
1920 E Warner Avenue
Santa Ana, CA 92705

(714) 340-7099
http://excelbislabs.com
Lic# C8-0000059-LIC

Watermelon Zkittles Pre Roll

Sample ID: 2407EXL2043.1990	Produced:	Client
Strain: Watermelon Zkittles	Collected:	Elevated Trading LLC
Matrix: Plant	Received: 02/02/2025	Lic. #
Type: Flower - Cured	Completed: 02/02/2025	N/A
Sample Size: ; Batch:	Batch#: WZ012825	N/A, CA 92705



Summary

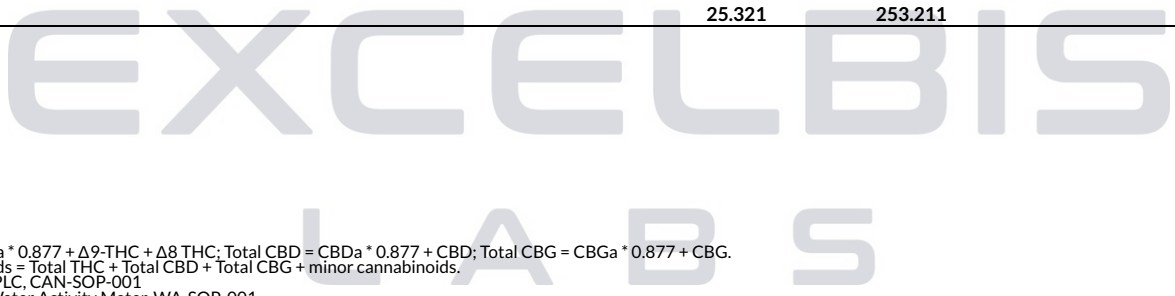
Test	Date Tested	Result
Batch		Complete
Cannabinoids		Complete
Moisture		13.8% - Complete

Cannabinoids

Complete

23.964% Total THC	1.029% Total CBD	25.321% Total Cannabinoids
-----------------------------	----------------------------	--------------------------------------

Analyte	LOD	LOQ	Result	Result
	mg/g	mg/g	%	mg/g
CBC	0.009	0.025	0.0622	0.622
CBD	0.025	0.100	0.9524	9.524
CBDa	0.019	0.050	0.0874	0.874
CBG	0.019	0.050	0.2661	2.661
CBN	0.009	0.050	ND	ND
Δ8-THC	0.025	0.100	ND	ND
Δ9-THC	0.019	0.100	0.2781	2.781
THCa	0.013	0.050	27.0077	270.077
THCV	0.025	0.100	ND	ND
Total THC			23.964	239.638
Total CBD			1.029	10.290
Total CBG			0.266	2.661
Total			25.321	253.211



Date Tested:

Total THC = THCa * 0.877 + Δ9-THC + Δ8 THC; Total CBD = CBDa * 0.877 + CBD; Total CBG = CBGa * 0.877 + CBG.
Total Cannabinoids = Total THC + Total CBD + Total CBG + minor cannabinoids.
Cannabinoids: HPLC, CAN-SOP-001
Water Activity: Water Activity Meter, WA-SOP-001
Moisture Content: Moisture Analyzer, MO-SOP-001
Foreign Matter: Visual Inspection, FM-SOP-001



Dr. Jerry White PhD Bryan Zahakaylo

Jerry White, PhD
Chief Scientific Officer

Bryan Zahakaylo
Analyst

Confident LIMS
All Rights Reserved
coa.support@confidentlims.com
(866) 506-5866
www.confidentlims.com



ND = Not Detected, NR = Not Reported, LOD = Limit of Detection, LOQ = Limit of Quantitation. This product has been tested by Excelbis Labs LLC using valid testing methodologies and a quality system as required by state law. All LQC samples were performed and met the prescribed acceptance criteria in 16 CCR section 5730, pursuant to 16 CCR section 5726(e)(13). Values reported relate only to the product tested. Excelbis Labs LLC makes no claims as to the efficacy, safety or other risks associated with any detected or non-detected levels of any compounds reported herein. This Certificate shall not be reproduced except in full, without the written approval of Excelbis Labs LLC. This Certificate of Analysis is limited to the sample tested in a batch. This Certificate does not make any representation or warranty for all Products within the tested Batch.



Wedding Cake Pre Roll

Sample ID: 2502EXL0535.2106

Strain: Wedding Cake

Matrix: Plant

Type: Flower - Cured

Sample Size: ; Batch:

Produced:

Collected:

Received: 02/04/2025

Completed: 02/04/2025

Batch#: WC012725

Client

Elevated Trading LLC

Lic. #



Summary

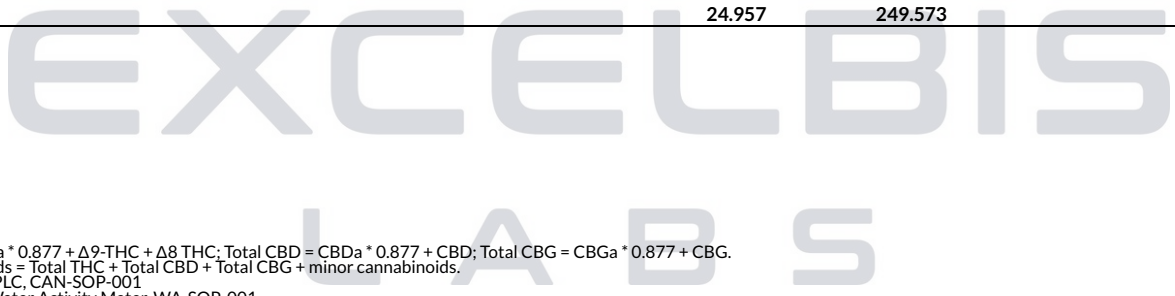
Test	Date Tested	Result
Batch		Complete
Cannabinoids		Complete
Moisture		14.8% - Complete

Cannabinoids

Complete

24.471% Total THC	0.362% Total CBD	24.957% Total Cannabinoids
-----------------------------	----------------------------	--------------------------------------

Analyte	LOD	LOQ	Result	Result
	mg/g	mg/g	%	mg/g
CBC	0.009	0.025	ND	ND
CBD	0.025	0.100	0.2879	2.879
CBDa	0.019	0.050	0.0848	0.848
CBG	0.019	0.050	0.1236	1.236
CBN	0.009	0.050	ND	ND
Δ8-THC	0.025	0.100	ND	ND
Δ9-THC	0.019	0.100	0.2767	2.767
THCa	0.013	0.050	27.5881	275.881
THCV	0.025	0.100	ND	ND
Total THC			24.471	244.715
Total CBD			0.362	3.623
Total CBG			0.124	1.236
Total			24.957	249.573



Date Tested:

Total THC = THCa * 0.877 + Δ9-THC + Δ8-THC; Total CBD = CBDa * 0.877 + CBD; Total CBG = CBGa * 0.877 + CBG.

Total Cannabinoids = Total THC + Total CBD + Total CBG + minor cannabinoids.

Cannabinoids: HPLC, CAN-SOP-001

Water Activity: Water Activity Meter, WA-SOP-001

Moisture Content: Moisture Analyzer, MO-SOP-001

Foreign Matter: Visual Inspection, FM-SOP-001



Dr. Jerry White PhD Bryan Zahakaylo

Jerry White, PhD
Chief Scientific Officer
02/04/2025

Bryan Zahakaylo
Analyst
02/04/2025

Confident LIMS
All Rights Reserved
coa.support@confidentlims.com
(866) 506-5866
www.confidentlims.com

