



Elevated Trading, LLC

Sample 614-010423-002

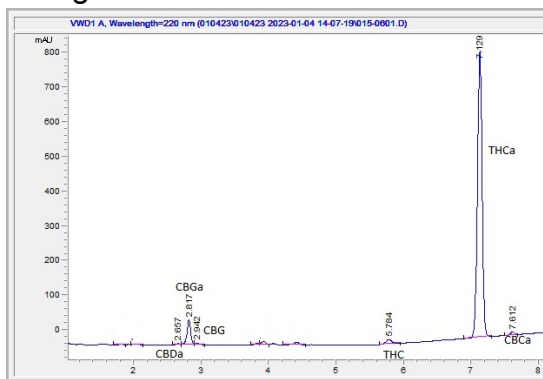
Pineapple THCa Flower

Sample Submitted: 01-04-2023; Report Date: 01-04-2023

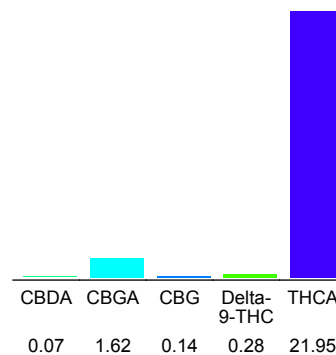
## Pineapple THCa Flower

Plant Material: Flower

### Chromatogram



### Cannabinoid Profile



### Cannabinoid Profile by HPLC

**0.28%**  
Delta-9-THC

**0.00%**  
CBD

**24.06%**  
Total Cannabinoids

| Cannabinoid                 | % wt         | mg/g         |
|-----------------------------|--------------|--------------|
| CBDA                        | 0.07         | 0.7          |
| CBGA                        | 1.62         | 16.2         |
| CBG                         | 0.14         | 1.4          |
| Delta-9-THC                 | 0.28         | 2.8          |
| THCA                        | 21.95        | 219.5        |
| <b>Total Cannabinoids</b>   | <b>24.06</b> | <b>240.6</b> |
| <b>Calculated CBD Yield</b> | <b>0.06</b>  | <b>0.61</b>  |

Calculated Maximum CBD Yield = CBD + 0.877 \* CBDA

**Marin Analytics, LLC**

250 Bel Marin Keys Blvd, Suite D4  
Novato, CA 94949

415-936-6477 / sarabiancalana1@gmail.com

**Sara Biancalana**  
Chief Scientist

This sample has been tested by Marin Analytics, LLC using valid testing methodologies and a quality system. Values reported relate only to the sample tested. Marin Analytics, LLC makes no claims as to the efficacy, safety or other risks associated with any detected or non-detected levels of any compounds reported herein. This Certificate shall not be reproduced except in full, without the written approval of Marin Analytics, LLC. Copyright 2022 Marin Analytics, LLC All Rights Reserved.



Elevated Trading LLC  
www.ElevatedTrading.com

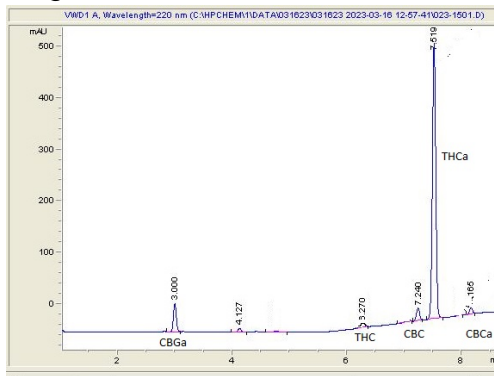
Sample 467-031623-017  
Indoor Gelato

Sample Submitted: 03-16-2023; Report Date: 03-16-2023

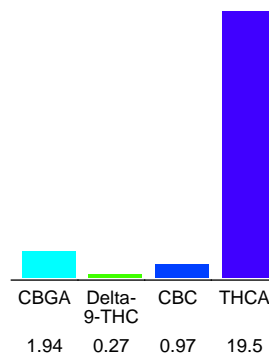
## Indoor Gelato THC-A Hemp

Plant Material: Flower

### Chromatogram



### Cannabinoid Profile



### Cannabinoid Profile by HPLC

**0.27%**  
Delta-9-THC

**0.00%**  
CBD

**22.68%**  
Total Cannabinoids

| Cannabinoid                 | % wt         | mg/g         |
|-----------------------------|--------------|--------------|
| CBGA                        | 1.94         | 19.4         |
| Delta-9-THC                 | 0.27         | 2.7          |
| CBC                         | 0.97         | 9.7          |
| THCA                        | 19.5         | 195.0        |
| <b>Total Cannabinoids</b>   | <b>22.68</b> | <b>226.8</b> |
| <b>Calculated CBD Yield</b> | <b>0.00</b>  | <b>0.00</b>  |

Calculated Maximum CBD Yield = CBD + 0.877 \* CBDA

**Marin Analytics, LLC**  
250 Bel Marin Keys Blvd, Suite D4  
Novato, CA 94949

415-936-6477 / sarabiancalana1@gmail.com

*Sara Biancalana*  
**Sara Biancalana**  
Chief Scientist

This sample has been tested by Marin Analytics, LLC using valid testing methodologies and a quality system. Values reported relate only to the sample tested. Marin Analytics, LLC makes no claims as to the efficacy, safety or other risks associated with any detected or non-detected levels of any compounds reported herein. This Certificate shall not be reproduced except in full, without the written approval of Marin Analytics, LLC. Copyright 2022 Marin Analytics, LLC All Rights Reserved.



# PINNACLE — ANALYTICS —

## Potency Results

**Sample Name:** *P. Runtz*  
**Client:** Elevated Trading LLC  
**Client Batch ID:**

Pinnacle-Analytics.com  
3549 Lear Way, Suite 101  
Medford OR 97504  
P:(541)300-8217

**Sample ID:** rC-C-302-C2217

Date Sampled: 1/18/2023

**Matrix:** Flower

Date Reported: 1/20/2023

**Prep Analyst:** Megan E.

Client License: N/A

**Analysis Method:** 0630322+1 H4 4-21-2022 #1.lcm

For R&D Purposes Only

**Sampling Method:** N/A

**Reference Method:** JCB 2009: HPLC/DAD

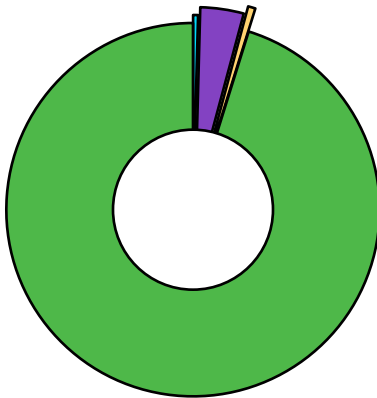
**Analysis Batch:** 1-19-2023 H4 185, 205, 247, 302 Flower

|                                      |       |
|--------------------------------------|-------|
| <b>Total THC</b> (THCA*0.877+d9-THC) | 22.0% |
| <b>Total CBD</b> (CBDA*0.877+CBD)    | <LOQ% |
| <b>Moisture Content</b>              | 12.7% |

| Cannabinoid               | % Weight    | mg/g         |
|---------------------------|-------------|--------------|
| CBDVA                     | <LOQ        | <LOQ         |
| CBDV                      | <LOQ        | <LOQ         |
| CBDA*                     | 0.111       | 1.11         |
| CBGA                      | 0.983       | 9.83         |
| CBG                       | <LOQ        | <LOQ         |
| CBD*                      | <LOQ        | <LOQ         |
| THCV                      | <LOQ        | <LOQ         |
| CBN                       | <LOQ        | <LOQ         |
| d9-THC*                   | 0.167       | 1.67         |
| d8-THC                    | <LOQ        | <LOQ         |
| CBC                       | <LOQ        | <LOQ         |
| THCA*                     | 24.9        | 249.0        |
| <b>Total Cannabinoids</b> | <b>26.2</b> | <b>262.0</b> |

\*ORELAP Accredited Analyte

Limit Of Quantitation: 0.1%, analyte not measured



- CBDA\*
- CBGA
- d9-THC\*
- THCA\*



These test results may not be altered or reproduced except in full without the permission of Pinnacle Analytics. These results were generated following the Oregon Administrative Rules and in accordance with the NELAP Institute under ORELAP License #4152  
Report generated by Routine\_Potency\_Rev10\_7-17-2022

Kris Ford, PhD  
Lab Director



# PINNACLE — ANALYTICS —

## Quality Control Results

**Analyst:** Megan E.

**Analysis Batch:** 1-19-2023 H4 185, 205, 247, 302 Flower

Pinnacle-Analytics.com  
3549 Lear Way, Suite 101  
Medford OR 97504  
P:(541)300-8217

|               | Duplicate RPD |       | LCS % Recovery |         | Method Blank |       |
|---------------|---------------|-------|----------------|---------|--------------|-------|
|               | H-0-C2195-b   | Limit | C-FL-011923    | Limits  | C-FB-011923  | Limit |
| <b>CBDA</b>   | 0.217%        | 10%   | 99.8%          | 90-110% | <LOQ/2       | LOQ/2 |
| <b>CBD</b>    | 1.59%         | 10%   | 101.0%         | 90-110% | <LOQ/2       | LOQ/2 |
| <b>d9-THC</b> | <LOQ%         | 30%   | 99.6%          | 90-110% | <LOQ/2       | LOQ/2 |
| <b>d8-THC</b> | <LOQ%         | 30%   | 99.3%          | 90-110% | <LOQ/2       | LOQ/2 |
| <b>THCA</b>   | <LOQ%         | 30%   | 98.8%          | 90-110% | <LOQ/2       | LOQ/2 |

RPD: Relative Percent Difference between unknown sample and its duplicate

LCS: Laboratory Control Sample with known concentration

Case Comments: There were no divergences from ordinary Quality Control procedures or SOPs.



These test results may not be altered or reproduced except in full without the permission of Pinnacle Analytics. These results were generated following the Oregon Administrative Rules and in accordance with the NELAP Institute under ORELAP License #4152  
Report generated by Routine\_Potency\_Rev10\_7-17-2022

Kris Ford, PhD  
Lab Director