



CBD Hemp Fruit Loops

Sample ID: G2B0116-02

Matrix: Industrial Hemp

Test ID: 5025844

Source ID: 1582

Date Sampled: 02/07/22

Date Accepted: 02/07/22

C Oregon LLC

Results at a Glance

Total THC : 0.48 %

Total CBD : 19 %

Total CBG : 1.1 %

Percent Moisture : 10.3 % **PASS**



**ISO 17025
ACCREDITED
LABORATORY**

Eric Wendt
Chief Science Officer - 2/9/2022



CBD Hemp Fruit Loops

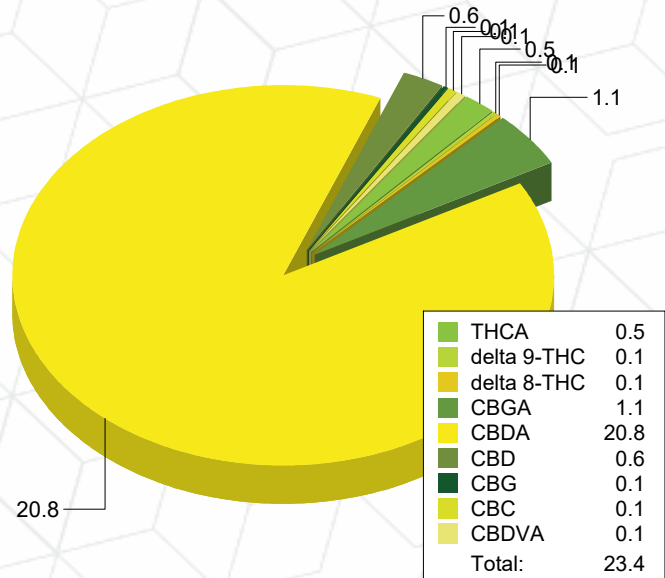
Sample ID: G2B0116-02 Matrix: Industrial Hemp
Test ID: 5025844
Source ID: 1582
Date Sampled: 02/07/22 Date Accepted: 02/07/22

C Oregon LLC

Potency Analysis

Date/Time Extracted: 02/08/22 13:08 Analysis Method/SOP: 215 Batch Identification: 2207013

	LOQ (%)	% by Wt.	mg/g	Cannabinoids Profile	
Total THC	0.010	0.48	4.8		
Total CBD	0.009	19	190		
Total CBG	0.0009	1.1	11		
THCA	0.0006	0.47	4.7		
delta 9-THC	0.0006	0.071	0.71		
delta 8-THC	0.005	0.050	0.5		
THCV	0.006	< LOQ	< LOQ		
THCVA	0.002	< LOQ	< LOQ		
CBD	0.002	0.59	5.9		
CBDA	0.002	21	210		
CBDV	0.006	< LOQ	< LOQ		
CBDVA	0.002	0.11	1.1		
CBN	0.003	< LOQ	< LOQ		
CBG	0.0009	0.085	0.85		
CBGA	0.0009	1.1	11		
CBC	0.010	0.14	1.4		



Moisture

Date/Time Extracted: 02/08/22 13:18 Analysis Method/SOP: 103
Moisture: 10.3 % Action Level: 15%

Potency results are reported on a dry weight basis.
Total THC = delta 9-THC + (THCA * 0.877)
Total CBD = CBD + (CBDA * 0.877)
Total CBG = CBG + (CBGA * 0.878)
LOQ=Limit of Quantification, the lowest measurable concentration of an analyte.




Eric Wendt
Chief Science Officer - 2/9/2022

These results relate only to the sample included on this report. The report may not be reproduced except in full, without the written permission of Green Leaf Lab.

This is for informational testing and is not compliance testing. Lab results apply to the sample as received.



Quality Control Potency

Batch: 2207013 - 215-Hemp

Blank(2207013-BLK1)							
Analyte	Result	LOQ	Units	%Recovery Limits	Extracted	Analyzed	Notes
THCA	< LOQ	0.0005	%		02/08/22 13:08	02/09/22 01:27	
THCA	< LOQ	5.000E-4	%		02/08/22 13:08	02/09/22 01:27	
delta 9-THC	< LOQ	0.0005	%		02/08/22 13:08	02/09/22 01:27	
delta 9-THC	< LOQ	5.000E-4	%		02/08/22 13:08	02/09/22 01:27	
delta 8-THC	< LOQ	0.004490	%		02/08/22 13:08	02/09/22 01:27	
delta 8-THC	< LOQ	0.004	%		02/08/22 13:08	02/09/22 01:27	
THCV	< LOQ	0.005055	%		02/08/22 13:08	02/09/22 01:27	
THCV	< LOQ	0.005	%		02/08/22 13:08	02/09/22 01:27	
THCVA	< LOQ	0.001885	%		02/08/22 13:08	02/09/22 01:27	
THCVA	< LOQ	0.002	%		02/08/22 13:08	02/09/22 01:27	
CBD	< LOQ	0.0005	%		02/08/22 13:08	02/09/22 01:27	
CBD	< LOQ	5.000E-4	%		02/08/22 13:08	02/09/22 01:27	
CBDA	< LOQ	0.0005	%		02/08/22 13:08	02/09/22 01:27	
CBDA	< LOQ	5.000E-4	%		02/08/22 13:08	02/09/22 01:27	
CBDV	< LOQ	0.005	%		02/08/22 13:08	02/09/22 01:27	
CBDV	< LOQ	0.005000	%		02/08/22 13:08	02/09/22 01:27	
CBDVA	< LOQ	0.002	%		02/08/22 13:08	02/09/22 01:27	
CBDVA	< LOQ	0.001640	%		02/08/22 13:08	02/09/22 01:27	
CBN	< LOQ	0.003	%		02/08/22 13:08	02/09/22 01:27	
CBN	< LOQ	0.002990	%		02/08/22 13:08	02/09/22 01:27	
CBG	< LOQ	0.0008	%		02/08/22 13:08	02/09/22 01:27	
CBG	< LOQ	7.900E-4	%		02/08/22 13:08	02/09/22 01:27	
CBGA	< LOQ	0.0008	%		02/08/22 13:08	02/09/22 01:27	
CBGA	< LOQ	7.900E-4	%		02/08/22 13:08	02/09/22 01:27	
CBC	< LOQ	0.009	%		02/08/22 13:08	02/09/22 01:27	
CBC	< LOQ	0.008965	%		02/08/22 13:08	02/09/22 01:27	

Reference(2207013-SRM1)							
Analyte	% Recovery	LOQ	Units	%Recovery Limits	Extracted	Analyzed	Notes
THCA	98.0	5.000E-4	%	80-120	02/08/22 13:08	02/09/22 02:01	
THCA	98.0	0.0005	%	80-120	02/08/22 13:08	02/09/22 02:01	
delta 9-THC	91.5	5.000E-4	%	80-120	02/08/22 13:08	02/09/22 02:01	
delta 9-THC	91.5	0.0005	%	80-120	02/08/22 13:08	02/09/22 02:01	
CBD	92.0	5.000E-4	%	80-120	02/08/22 13:08	02/09/22 02:01	
CBD	92.0	0.0005	%	80-120	02/08/22 13:08	02/09/22 02:01	
CBDA	98.5	5.000E-4	%	80-120	02/08/22 13:08	02/09/22 02:01	
CBDA	98.5	0.0005	%	80-120	02/08/22 13:08	02/09/22 02:01	

Moisture Content



Eric Wendt
Chief Science Officer - 2/9/2022



Quality Control Moisture Content (Continued)

Batch: 2207006 - 103

Reference(2207006-SRM1)							
Analyte	% Recovery	LOQ	Units	%Recovery Limits	Extracted	Analyzed	Notes
Percent Moisture	95.6		%	80-120	02/08/22 13:18	02/08/22 13:18	

Reference(2207006-SRM2)							
Analyte	% Recovery	LOQ	Units	%Recovery Limits	Extracted	Analyzed	Notes
Percent Moisture	84.3		%	80-120	02/08/22 13:18	02/08/22 13:18	



Eric Wendt
Chief Science Officer - 2/9/2022

These results relate only to the sample included on this report. The report may not be reproduced except in full, without the written permission of Green Leaf Lab.

This is for informational testing and is not compliance testing. Lab results apply to the sample as received.



Notes and Definitions

Regulatory Compliance samples were collected onsite at facility according to ORELAP-SOP-001 and ORELAP-SOP-002 and following Sampling Plan FN117.
Quality Control samples were tested as received.

- ATM Non-cannabis matrix related interference or suppression of Internal standard
- BLI Baseline Interference - Cannabinoid peak interference in chromatographic baseline affecting QC recovery .
- BLK Analyte detected in method blank, but not associated samples.
- BSH Blank Spike High - Blank Spike recovery above method limit. no detections in samples.
- BSL Blank Spike Low - Blank Spike recovery below lower method limit, analyte chromatography reviewed manually for all samples.
- CBD Interference due to co-elution
- CV1 CBD matrix interference on GC Pest chromatography
- CV2 CCV was above acceptance criteria, Non-detect samples are considered acceptable.
- INF CCV was below acceptance criteria, sample still exceeds regulatory limit.
- ISH One or more QC falls outside acceptance criteria. Data entered into LIMS for informational purposes only.
- ISL Internal Standard concentration is above acceptance criteria.
- MSH Internal Standard concentration is below acceptance criteria.
- MSI Matrix Spike High - Matrix Spike recovery above method limits.
- MSL Matrix Spike Interference - Matrix spike source sample contains analyte hit above calibration affecting recovery accuracy in Matrix Spike.
- TPP
- U Matrix Spike Low - Matrix Spike recovery below lower method limit, analyte chromatography reviewed manually for all samples.
Internal Standard concentration outside control limit due to matrix interference



Eric Wendt
Chief Science Officer - 2/9/2022

These results relate only to the sample included on this report. The report may not be reproduced except in full, without the written permission of Green Leaf Lab.

This is for informational testing and is not compliance testing. Lab results apply to the sample as received.